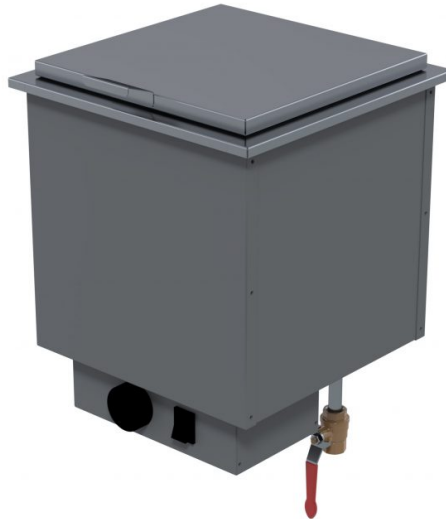
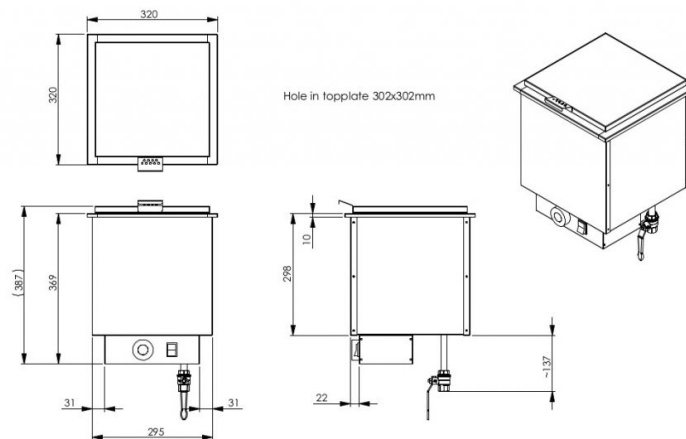


# Drop-In sausage boiler



- **Product code:** DI L Sausage boiler
- **Dimensions, mm (w\*d\*h):** 320\*320\*387
- **Operating temperature:** +60....+90
- **Degree of protection:** IP44
- **Capacity (kW):** 0,5
- **Frequency (Hz):** 50
- **Voltage (V):** 220 - 230



- intended for short-term storage of sausages at +60 °C to +90 °C
- made of stainless steel
- one compartment, hinged door
- drain connection with valve at the bottom of basin
- thermostat-adjusted temperature
- capacity 1,7 l

[Technical drawing, PDF-file](#)

**RESTMEC**