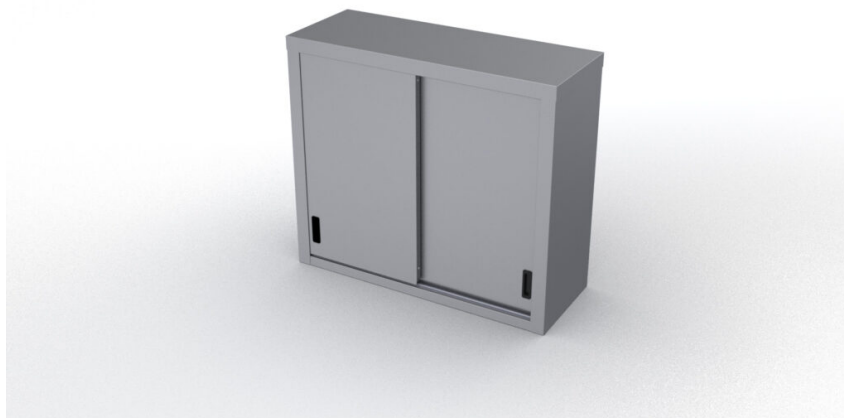
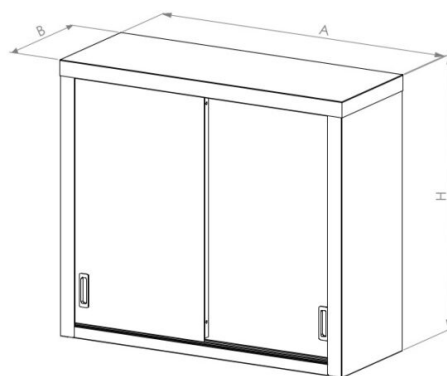


# Wall cabinet with sliding doors



- **Product code:** SNK-2 LU



Code	A [mm]	B [mm]	H [mm]
SNK LU 800	800	300	700
SNK LU 1200	1200	300	700

- wall cupboard is made of high-quality stainless steel
- there is 1 shelf in the cupboard, adjustable
- it is possible to order the locking system, if needed

[Technical drawing, PDF-file](#)